

SAMPSON OCEANFRONT PARK LIGHTING IMPROVEMENTS

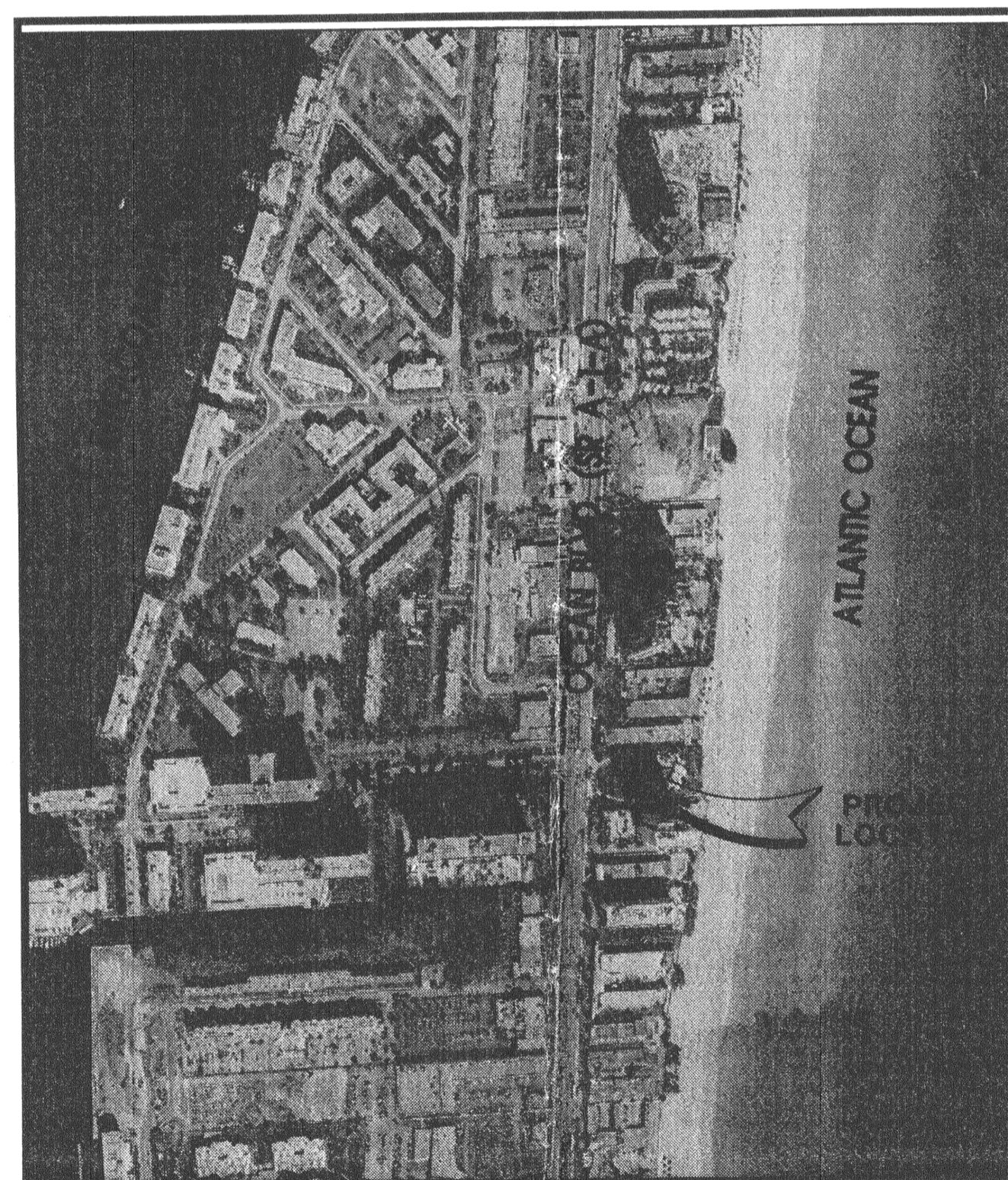
CITY OF SUNNY ISLES BEACH, FLORIDA

APRIL, 2004



INDEX OF SHEETS

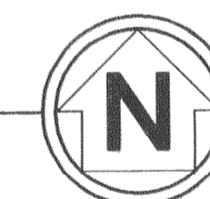
	COVER SHEET
E1	KEY MAP PLAN
E2	PARKING PLAN
E3	TYPICAL SECTIONS AND NOTES



LOCATION MAP

SECTION 11, TWP. 52 S, RNG. 42 E

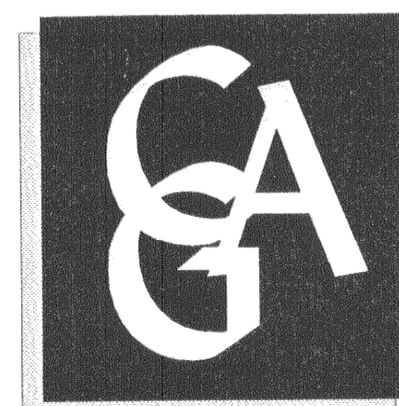
N.T.S.



CITY COMMISSION

MAYOR:	NORMAN S. EDELCUP
VICE MAYOR:	GERRY GOODMAN
COMMISSIONER:	ROSLYN BREZIN
COMMISSIONER:	DANNY IGLESIAS
COMMISSIONER:	LEWIS THALER

PERMITTING AGENCIES	DATE SUBMITTED	DATE APPROVED	PERMIT NUMBER
CITY OF SUNNY ISLES BEACH			



Calvin, Giordano & Associates, Inc.
Engineers Surveyors Planners

1800 Eller Drive Suite 600
Fort Lauderdale, Florida 33316
954.921.7781 954.921.8807 fax
Certificate of Authorization 514

FOR BIDDING PURPOSES ONLY
SET#07

CGA PROJECT No.: 03-4465

FILE No.: 03-4465-COVER.dwg